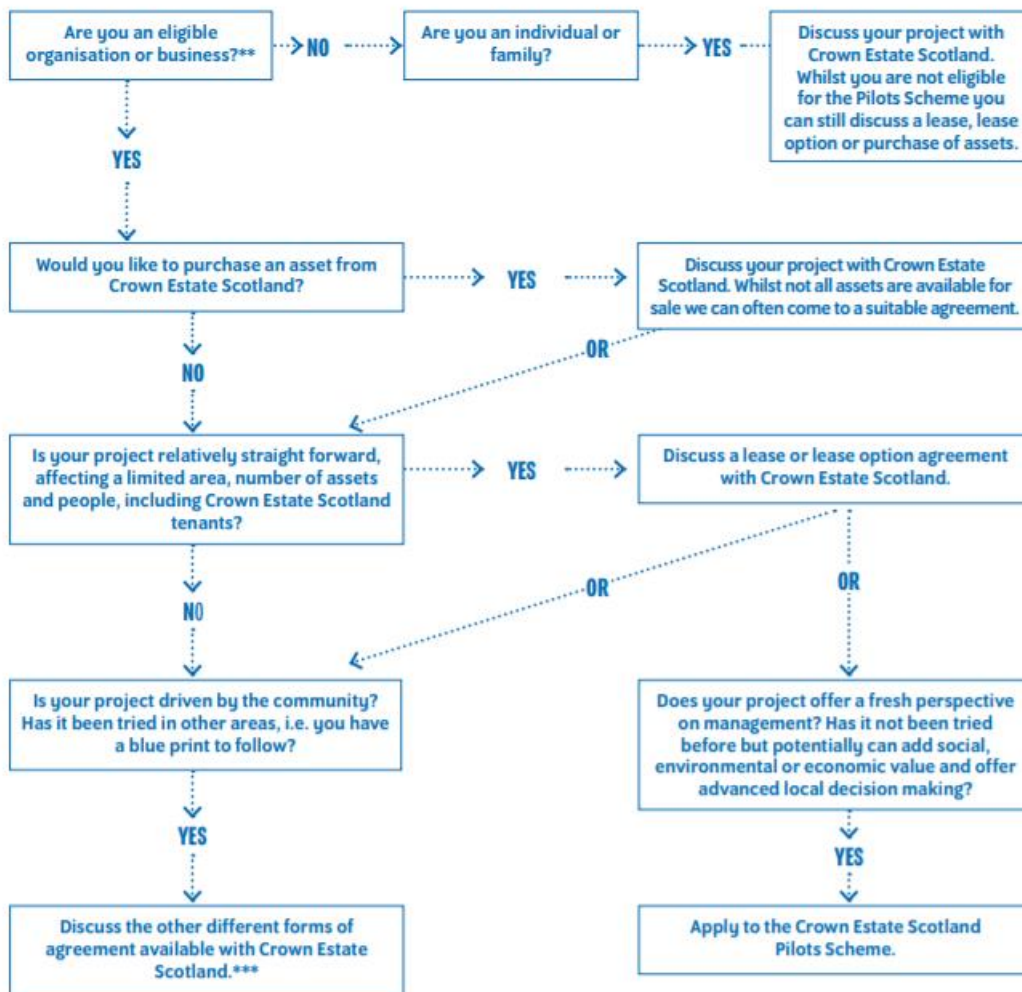


## Community landowners engaging with Crown Estate Scotland

### Routes to managing or leasing assets

There are a number of different routes that can be taken to manage or lease assets that comprise the Scottish Crown Estate. The diagram below, taken from our Local Pilots Scheme [guidance](#), gives an overview of the various possible routes to different types of agreements.



### Local Pilots Scheme

Crown Estate Scotland launched a scheme in June 2018 to encourage local authorities, development trusts and other bodies to manage Scottish Crown Estate land and property in their local area.

It is hoped that the scheme – and the projects emerging from it – will enable us to work with others to test different methods of managing eligible Scottish Crown Estate assets, empowering communities and giving people more say in decisions that impact the land, coastline and sea near where they live.

Following engagement and consultation with community organisations, local authorities and others on the structure and design of the scheme (see [here](#) for a summary of consultation responses), the

Stage One application process opened on 20 June and closed on 16 August 2018. 13 applications were received.

The organisations who have each submitted a single Stage 1 application are:

Clyde Fishermens' Association & Clyde Fishermens' Trust  
Comhairle nan Eilean Siar  
Community Inshore Fisheries Alliance  
Findhorn Village Conservation Company  
Forth District Salmon Fisheries Board  
Galson Estate Trust  
Lochgoil Moorings Association & Lochgoil Jetties Trust  
Mallaig Harbour Authority  
Orkney Islands Council  
Portgordon Community Harbour Association  
Shetland Islands Council  
St. Abbs and Eyemouth Voluntary Marine Reserve  
Tay & Earn Trust

We are now considering each application in accordance with our [criteria and guidance](#) including taking comments from the Scottish Government's Stakeholder Advisory Group on the Crown Estate. This will help Crown Estate Scotland determine whether proposals should be developed further and proceed to Stage 2 of the assessment process. An overview of the process and timetable is in section 9 of the guidance [here](#).

Applicants for proposals that do proceed to Stage 2 will be required to set out more detail on how existing tenants will be consulted and considered, which is an essential part of the overall assessment process. Projects that continue to Stage 2 will also be asked to provide a map that will be used by Crown Estate Scotland to ensure existing tenants are aware that the proposal is under consideration, and to foster direct dialogue between the applicant and tenants, working within data protection rules.

No decision will be taken to agree a pilot project until the whole assessment process has been completed, Stage 2 of which runs until at earliest 25 March 2019.

### **Examples of local engagement**

Engagement across the estate takes different forms, recognising that there is not one-size-fits all.

#### **Glenlivet**

- Award winning management & engagement activity
- Community liaison group; support development trust
- Visitor & community facilities
- Education – over 350 pupils visit pa
- Mountain bike trails – over 13,000 visitors pa, supporting local businesses
- Partnership approach securing circa £4m from Heritage Lottery Fund

#### **Tobermory**

- Long-standing relationship with community-owned harbour association
- The Crown Estate supported increasing berthing capacity and visitor facilities
- Local management agreement in place – helped the harbour association secure statutory harbour authority status

- Working towards lease of larger area of seabed

#### **Energy systems**

- We are currently investigating models for development of localised energy systems projects using offshore renewables, where generated electricity is stored then used at a local level.
- The aim is that we end up with models that can then be tested and used by those interested in systems projects where there is potential for offshore renewables to be part of the mix.
- This is part of our efforts to support offshore renewables, contribute to Scottish Government energy targets – and support coastal communities, in this case through provision of local energy solutions.

#### **Agreements for communities**

- The Crown Estate, prior to Crown Estate Scotland being established in April 2017, offered what were called Local Management Agreements (LMAs). These were option agreements designed for community bodies who required some certainty in order to secure funding and progress plans.
- The Crown Estate often provided funds for feasibility studies or other work that would help the projects progress.
- One example of an LMA projects is Comman Na Mara's berthing facilities etc. at Lochmaddy on north Uist. The Crown Estate invested £414,000 in 26 berths and visitor facilities, and the pontoons opened in 2014. Ships and boats from across Europe now visit, and local businesses are reporting the benefits. The annual St Kilda Challenge has also been established.
- The Local Pilots Scheme above takes this further by being a more comprehensive process and allowing for a variety of management approaches

The Board, agents and staff team are out and about across the estate as much as possible. The Board has visited Shetland, Argyll & Bute, Wick and will soon be at Glenlivet (early October).